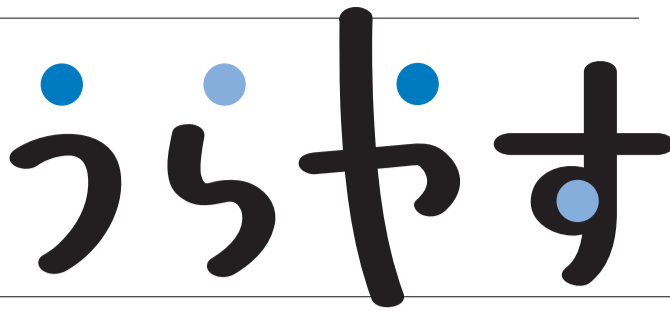




City News



U R A Y A S U

Published by the City of Urayasu
1-1-1 Nekozone, Urayasu-shi,
Chiba 279-8501
☎ 047-351-1111
<https://www.city.urayasu.lg.jp>

Population and No. of Households in Urayasu

Population: 169,541
Male: 82,420
Female: 87,121
Households: 83,196
Foreign Residents: 4,206
(As of February 28, 2023)



Celebrating the 40th Anniversary of Establishment of Municipality!

Commemorative Ceremony & Parade

April 29 (National Holiday/Sat.)

In April 2021, Urayasu City marked its 40th anniversary of its establishment of municipality. However, the ceremony was postponed due to the effects of coronavirus infections.

Since our current situation permits, A ceremony and a parade will be held celebrating the city's 40th anniversary of establishment of municipality, as well as for the 150th anniversary of Chiba Prefecture.

Parade

There will also be a special parade by Tokyo Disney Resort, celebrating its 40th anniversary. The parade route is 700m. Please enjoy the parade at the venue.

Time: Around noon to 1:15 p.m.

Location: Symbol Road Area's Exchange Plaza (Roads adjacent to Ake-mi 7-chome) to Roads nearby Sogo Park

Inquiries: General Affairs Section **Tel:** 712-6114

40th Anniversary: Citizens' Festival and Ueki Festival

April 29 (National Holiday/Sat.) and April 30 (Sun.), 10 a.m. to 4 p.m.

Location: Sogo Park (Free shuttle buses will be available nearby all the stations within Urayasu City)

Inquiries:

More about the Citizen's Festival... Commerce Industry and Tourism Section **Tel:** 712-6295

More about the Ueki Festival... Parks & Public Areas Section **Tel:** 712-6728

Special Stage

29th ... Opening Ceremony, performances selected from an open application process, etc.

30th ... Performances selected from an open application process, etc.

Shops (food and drinks, goods, experiences, food trucks, etc.)

Advertisements of various stores and activities, a photo exhibition of beautiful sceneries in Urayasu City

Ueki Festival

A seedlings market, free distribution of compost and more

Experiential shops where children can play the role of a salesperson or a shopper

A display of service vehicles, such as police cars and fire trucks, bus, and others (Note: Only available on the 30th)

Interactive sports experience with the Briobecca Urayasu, Bardral Urayasu, and Urayasu D-Rocks (Note: Only available on the 30th)

(In case of stormy weather, the event may be cancelled)

Cyclists Obligated to Make a Sincere Effort to Wear Helmets Starting April 1

A quarter of all traffic accidents within the prefecture involve cyclists. Many cyclists who die in these accidents sustain head injuries, and the mortality rate of individuals not wearing a helmet is 2.2 times higher than those wearing a helmet. Please follow the cycling rules stated in "Chiba Cycle Rule" and prioritize safety when riding a bicycle.



Chiba Cycle Rule

Before Cycling

1. Enroll in bicycle insurance
2. Conduct a maintenance check
3. Put on reflectors
4. Wear a helmet
5. Do not drink alcoholic beverage and drive

When Cycling

1. Ride on the left side of a road
2. Yield to pedestrians
3. Do not multitask when cycling
4. Check for safety at intersections
5. Turn on the light in the evening

Inquiries: Citizens Safety Measures Section **Tel:** 712-6590

Information Regarding Novel Coronavirus

Wearing Masks

Starting March 13, the Japanese government made the decision to allow individuals to decide for themselves whether or not to wear a mask as a preventative measure against novel coronavirus infections. Please do not force anyone to wear a mask or to take it off.



However, the use of a mask is recommended in the following situations:

- When visiting medical institutions or facilities for the elderly
- When riding crowded trains or buses during rush-hours, etc.
- When individuals at a higher risk of serious symptoms are visiting crowded locations during seasons in which infectious diseases rise

Additionally, the use of a mask is recommended for following situations in Urayasu City facilities:

- When event organizers recommend

masks in public halls, Sports Park Gymnasium, and other facilities

- When groups and organizations using a facility require masks in their guidelines
- When visiting a facility for elderly or disabled persons

Inquiries: Health Promotion Section **Tel:** 381-9053

Group Vaccinations Are No Longer Available

Group vaccinations that were available at the Urayasu Vaccination Center are no longer available as of March 29. If you would like to be vaccinated, please receive an individual vaccination provided at selected medical institutions.

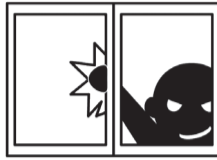
Inquiries: Novel Coronavirus Vaccine Call Center **Tel:** 0120-151-670



Taking Security Measures at Home

Cases of malicious crimes, such as burglary, are increasing. How can we protect our precious assets, family, and ourselves? Let's understand the characteristics of houses that robbers are likely to target, and take security measures before anything happens.

- Houses surrounded by high walls or hedges have many blind spots that are not visible from residents or neighbors.
 - Installing an additional high-security lock on the front door, or setting surveillance cameras in blind spots can be effective. Applying security films on windows can also be a good measure to take.
- In many cases, burglars enter from a window. Take a look around your exterior, and consider relocating any items (a carport, an AC outdoor unit etc.) that can be used as a method to enter through a window.
- About 30% of crimes in Urayasu City consist of bicycle theft, and this number is not decreasing. Take basic actions to prevent theft.
 - ✔ Register your bicycle
 - ✔ Always use your bike lock, even at home
 - ✔ Make sure to use a secondary lock, like a cable lock
- At newly constructed apartments, the residents are new to the building and may not yet be familiar with each other. Suspicious individuals may not be easily identified, so please be extra cautious in such cases.



Inquiries: Citizens Safety Measures Section **Tel:** 712-6590

The Folk Museum Reopens



The Themed Exhibition Room has been renewed and will be available starting April 1. The previous exhibit introduced our traditional culture and our history as a fishing town. Now, in addition to this, you will see how Urayasu City was established and has exponentially developed as a waterfront city. We are looking forward to seeing you there.

Reopening Celebration Event
Date and time: April 1 (Sat.) and 2 (Sun.), 9:30 a.m. to 11:30 a.m., 2:00 p.m. to 3:30 p.m.

Details: Experience *beka-bune* boat riding, nori seaweed toasting etc.

Note: No application is necessary. Please come directly to the venue.

Inquiries: Folk Museum **Tel:** 305-4300

Recruiting Tenants for Chiba Prefecture Housing

Application: Apply by April 15 (Sat.) (must be postmarked by this date) by sending an application form [available at the Housing Affairs Section (Urayasu City Hall 6F), General Affairs Section (Urayasu City Hall 1F), City Service Centers, or on Saturdays and Sundays, at the Central Management Office (Urayasu City Hall 1F)] to the Chiba Prefecture Public Housing Corporation (1-16 Sakaecho, Chuo-ku, Chiba City, 260-0016).

Note: For more information, please refer to the Chiba Prefecture Public Housing Corporation website: <https://www.chiba-kousya.or.jp>

Inquiries: Chiba Prefecture Public Housing Corporation Recruiting Section **Tel:** 043-222-9200 (Housing Affairs Section)

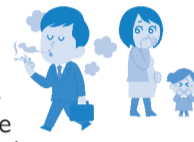
TV Reception Failure Caused By Mobile Phone Base Stations Using 700MHz

Due to radio wave emissions, TV reception failures may occur for about four weeks starting April 20 (Thu.) in Todaijima, Kitazakae, Nekozane, Kairaku, and Mihama areas. We will distribute flyers with more information to households that possibly could experience this issue. Please contact us if you encounter any reception problems.

Inquiries: 700MHz TV Reception Failure Countermeasure Call Center **Tel:** 0120-700-012 (Environmental Preservation Section)

Do Not Litter Or Smoke on Public Streets

Urayasu City has an ordinance enacted to prohibit littering. We appreciate your cooperation in following the rules to keep our city clean.



Smoking on public streets may not only lead to the littering of cigarette butts, but can also be an inconvenience to others nearby who are trying to avoid the smoke and odor. In order to create a comfortable environment for everyone, please smoke only in the designated smoking areas. In March, a smoking area near Maihama Station was set up.

Inquiries: Environmental Health Section **Tel:** 712-6495

Opening the Sanbanze Coastal Water Facility to the Public

Date and time: April 23 (Sun.), 3:00 p.m. to 4:00 p.m.

Note: No application is necessary. Please come directly to the venue.

Inquiry: Sanbanze Environmental Observation Center **Tel:** 711-1601 (Environmental Preservation Section)

Urayasu City Scholarship Support Program

Urayasu City grants scholarships (no repayment required) to students whose guardian lives in Urayasu City, have a record of more than one year on the Basic Resident Register, who attend a high school or a university, and who meet other requirements. Please refer to the city website or contact us for more details.

Inquiries: Education Administration Department **Tel:** 712-6712

Funds to Support Children Orphaned in a Traffic Accident

We offer education scholarships and other support to children who have been orphaned after their guardian has died or been severely disabled in a traffic accident. Please contact us for more details.

Inquiries: Social Welfare Council **Tel:** 355-5271 (Social Welfare Section)

Puppet Shows : "The Hedgehog and the Gold Coin" and "A Tiny, Tiny Puppet Show"

Time and date: May 28 (Sun.) 4:00 p.m. to 4:50 p.m. (doors open: 3:45 p.m.)

Location: Shin-Urayasu Culture Plaza (Inside IL Mare)

Eligibility: Residents, employees, and students of Urayasu City, from children of elementary school up to 22 years old. 80 people on a first-come, first-served basis



Performers: Puppet Theatre PUK

Application: April 1 (Sat.) from 10 a.m., please come directly or call Shin-Urayasu Culture Plaza **Tel:** 355-7311

Inquiries: Shin-Urayasu Culture Plaza (Youth Service Section)



A Stroll with the Mayor

Etsushi Uchida, Mayor of Urayasu City

Evacuation Support in the Event of a Disaster

Starting May 8th, based on the Infectious Disease Act, the Japanese government has decided to change the categorization of the novel coronavirus infection from Class 2 down to Class 5. This means that we will take a more relaxed approach for preventive measures. However, we kindly ask you to still keep taking precautions in places that have a high risk of infection.

12 years have passed since the Tohoku Earthquake and Tsunami, and this year marks the 100th year since the Great Kanto Earthquake. We are all concerned that a large-scale Tokyo metropolitan earthquake, or Nankai Trough earthquake, may occur. Meanwhile, we also need to prepare for flood damages caused by typhoons and band-shaped rainfalls.

In the event of a disaster, fleeing dangerous areas and safely evacuating in a quick manner is the most important thing you can do to protect your life. However,

depending on physical conditions and other factors, it might be difficult for some people to evacuate alone.

For those who will have difficulties evacuating alone (persons requiring evacuation support), it is important for us to understand in advance the kind of evacuation support each individual decides to request (individual evacuation plan).

Based on the 2021 amendments of the Basic Act of Disaster Management, it is the obligation of the municipal government to make sincere efforts in creating individual evacuation plans. Starting in 2023, Urayasu City will start to create these plans, beginning with certain high-priority individuals.

We will prioritize creating these individual evacuation plans for individuals based on their physical and mental conditions, and approximately 1000 people who

are elderly or handicapped have already been counted. However, referring to the hazard map and other housing conditions of each individual, we have numbered 225 people that must receive priority.

Once the individual evacuation plans have been created, the information will be shared with care managers, welfare commissioners, voluntary disaster prevention organizations, the fire department, and related departments at the City Hall. Whenever necessary, they will assist in quick and safe evacuation measures to the city's designated welfare evacuation shelters.

We cannot stop a disaster from occurring, but we can prepare ourselves for sudden events. We kindly ask you to consider actions you would personally take in the event of a disaster.

Recyclable Waste Disposal Schedule

Collection Area	Bottles/Cans/ PET plastic bottles	Newspapers/ Magazines
Nekozane, Kitazakae, Todaijima	Every Tue.	Every Mon.
Horie, Higashino, Fujimi, Maihama, Tekkadori 3-chome	Every Wed.	Every Sat.
Kairaku, Mihama, Irifune, Hinode, Akemi	Every Thu.	Every Mon.
Tomioka, Imagawa, Benten, Takasu, Minato, Tekkadori 1- and 2-chome, Chidori	Every Fri.	Every Sat.

* Please put out your garbage between 7 a.m. and 8 a.m. It is against the rules to put it out earlier or later than this designated time as it could become a nuisance in your neighborhood.

* Bulky items will be collected separately on request by phone. Call the Bulky Items Reception Center ☎ 305-4000. For inquiries, contact the Garbage-Free Section ☎ 712-6467.

FOREIGN RESIDENTS' ASSISTANCE DESK

Urayasu City provides consultation services concerning daily life such as medical, educational or job-related matters.

HOURS: 10 a.m. - 12 noon, 1 - 4 p.m. weekdays

LANGUAGES: English, French, Chinese, Polish, Russian and Japanese

PHONE NUMBER & LOCATION: 712-6910

Urayasu City Hall Local Activities Promotion Section

Foreign Residents Advisory Corner

Hours: Every Monday to Friday, 9 a.m. to 9 p.m., every Saturday and Sunday, 9 a.m. to 5 p.m.

Languages: English

Phone Number & Location: 306-5181, International Center